

# Weather analysis and forecasting in modern age An overview

Dr. K Prasad (Rtd. DDGM, IMD)  
Weather Risk Ltd.

# Numerical weather prediction (NWP)

- Backbone of modern day weather forecasting services
- Highly advanced and sophisticated NWP models
- Great improvements in prediction skill
  - Tremendous enhancement of data base from remote sensing platforms
  - Highly powerful computing systems
  - Advancements in modeling techniques
  - Very high resolution numerical models
  - Global models on mesoscale resolutions
  - Regional models on very fine resolutions

# Real Time Data & Products from Global NWP systems

## WMO(WWW)/Global Observing System (GOS)

Surface based and space based observing systems – global network

Conventional observations

- Surface

- Upper air

Non-conventional observations

Remote sensing platforms

- Aircraft

- Weather Satellites

  - Polar orbiting & Geostationary

# Real Time Data & Products from Global NWP systems

## Satellite data

- Radiances

- Cloud motion vectors

- water vapor winds

- Outgoing Longwave Radiation (OLR)

- Precipitation estimates

- Tropical Rainfall Measuring Mission (TRMM)

## Doppler Wx Radar

- Reflectivity

- Atmospheric winds

- Precipitation estimates

# Data Transport

WMO's Global Telecommunication System  
(GTS)

Broadband service network

# Forecast Products

- Global forecast models
  - NOAA/NCEP Global Forecast System (GFS)
    - Short range forecasts (up to 3 days)
    - Medium range forecasts (4-10 days)
    - Horizontal grid resolution  $\sim$  20-25 km
    - Gridded fields of various atmospheric parameters – initial analysis and forecasts
      - Air temperature, humidity, wind speed/direction, precipitation rate, solar radiation, sunshine duration etc. in real time

# Forecast Products

- Global forecast models
  - NOAA/NCEP Climate Forecast System (CFS)
    - Extended range forecasts (beyond 10 days and upto a month)
    - Long range forecasts (monthly & seasonal averages)
    - Horizontal grid resolution  $\sim 100$  km

# Forecast Products

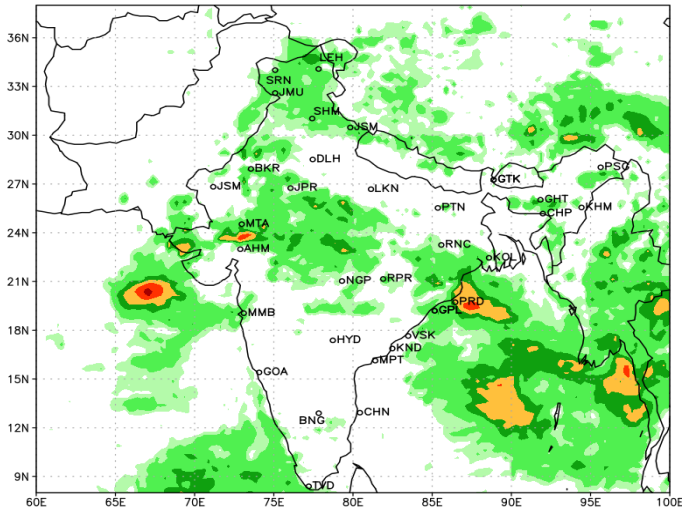
- Limited area or regional models
- Weather Research & Forecast models (WRF)
  - Very high resolution (A few kms)
  - Very short range & short range forecasts
  - Area specific



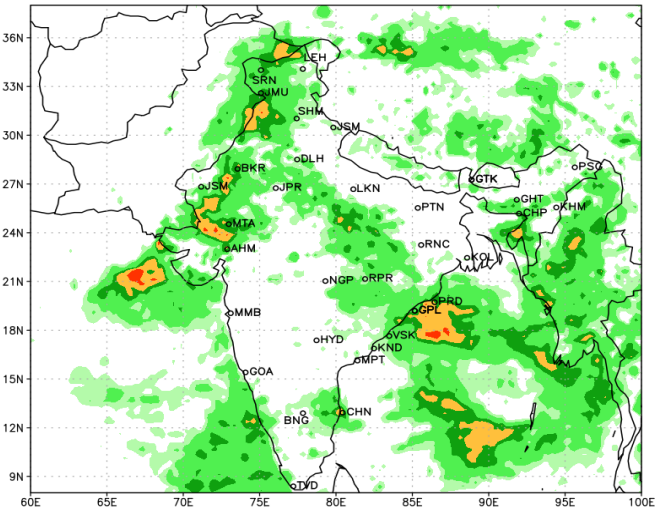
*A few demo products  
processed at WRL*

# J&K Floods Sep-2014 TRMM estimates (2-5 Sep)

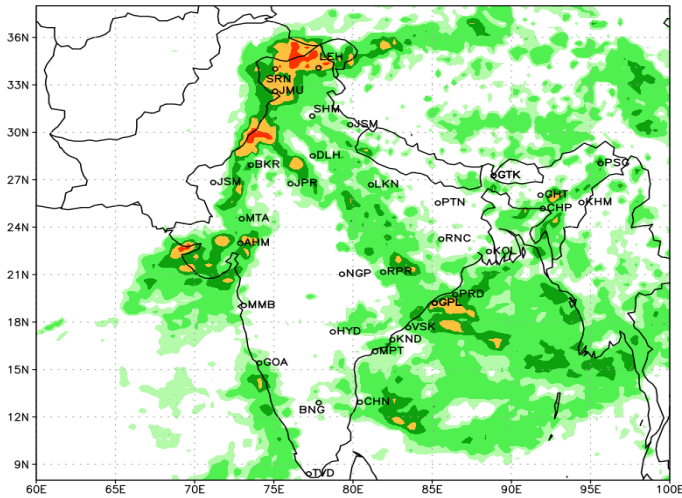
trmm (mm) 02Sep2014 24h cum



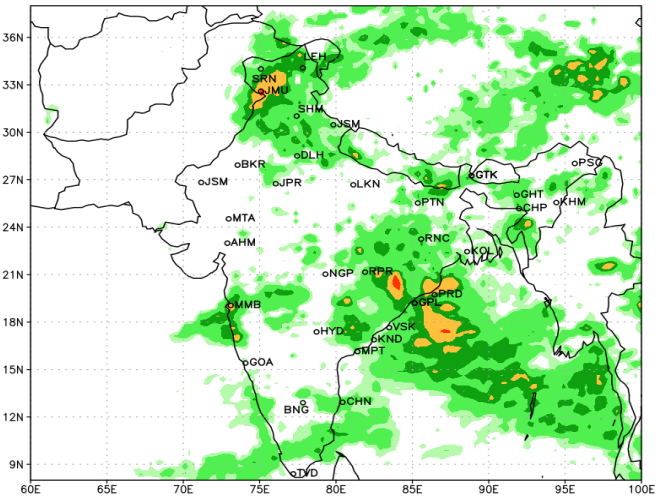
trmm (mm) 03Sep2014 24h cum



trmm (mm) 04Sep2014 24h cum

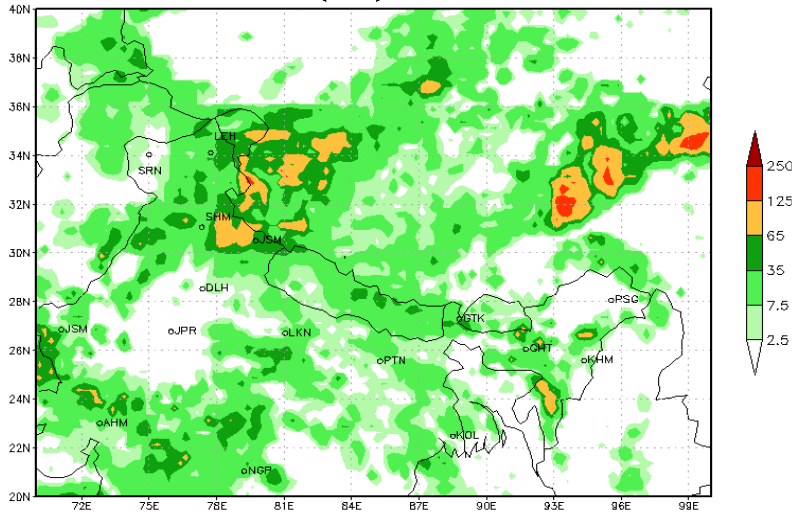


trmm (mm) 05Sep2014 24h cum

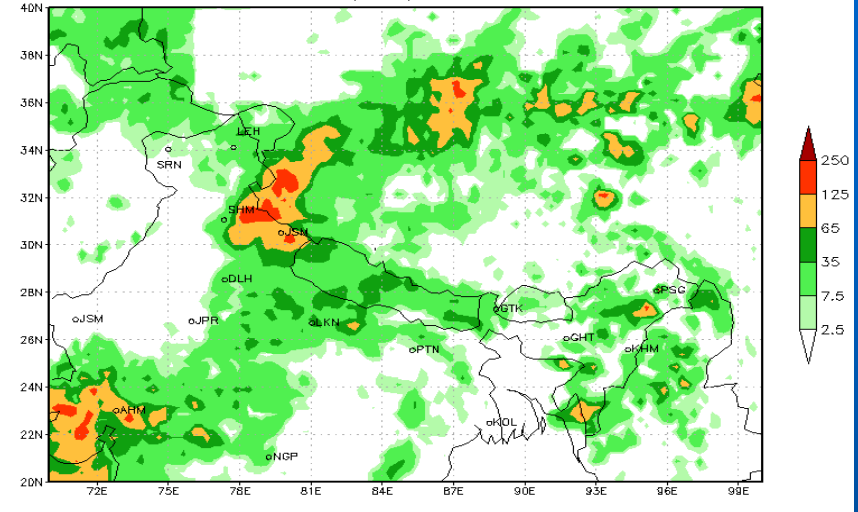


# U'Khand Floods Jun-2013 TRMM estimates (15-18 Jun)

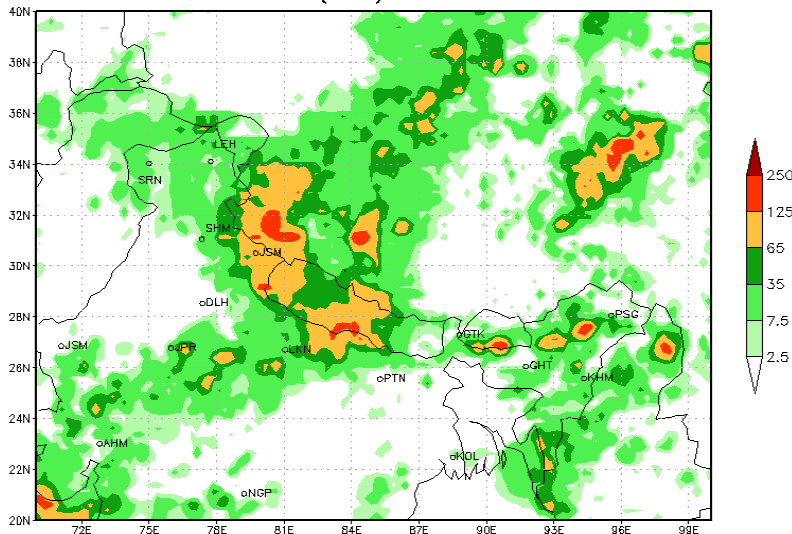
trmm (mm) 24h cum



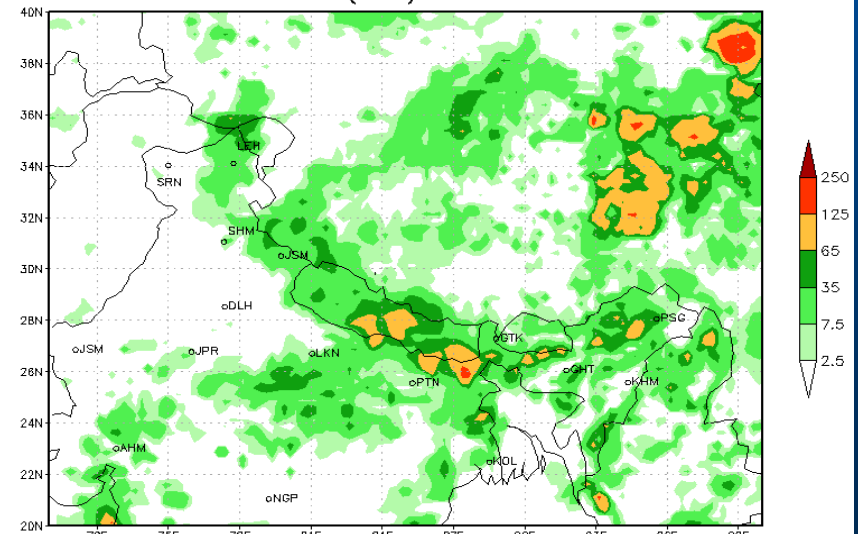
trmm (mm) 24h cum



trmm (mm) 24h cum

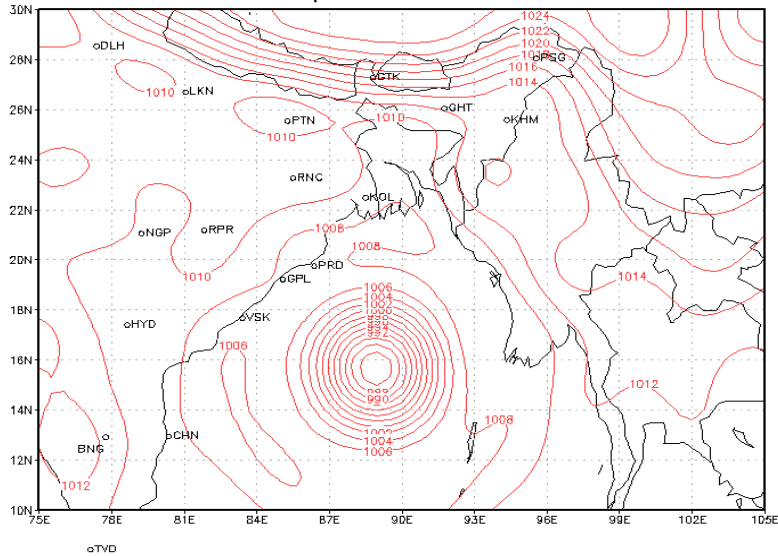


trmm (mm) 24h cum

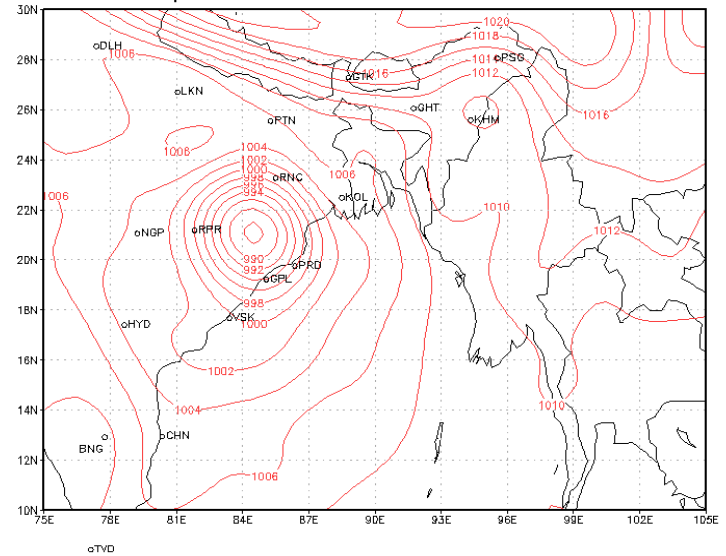


# Tropical cyclone Phailin Oct 2013

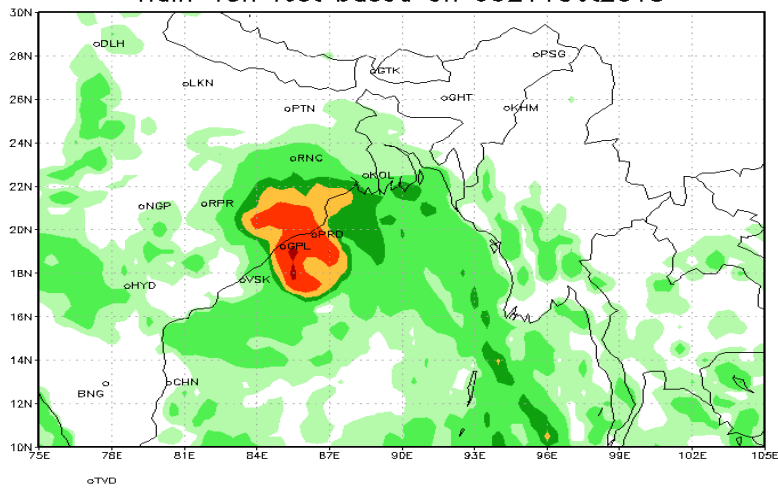
mslp 00Z11Oct2013



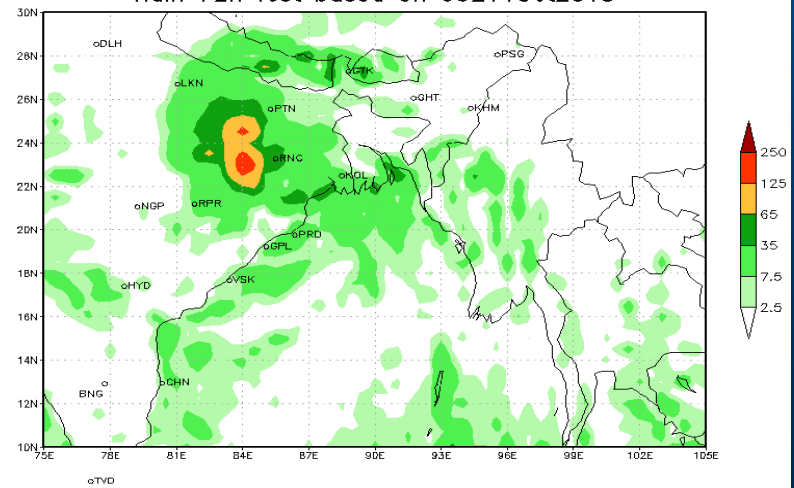
mslp 48h fcst based on 00Z11Oct2013



Rain 48h fcst based on 00Z11Oct2013



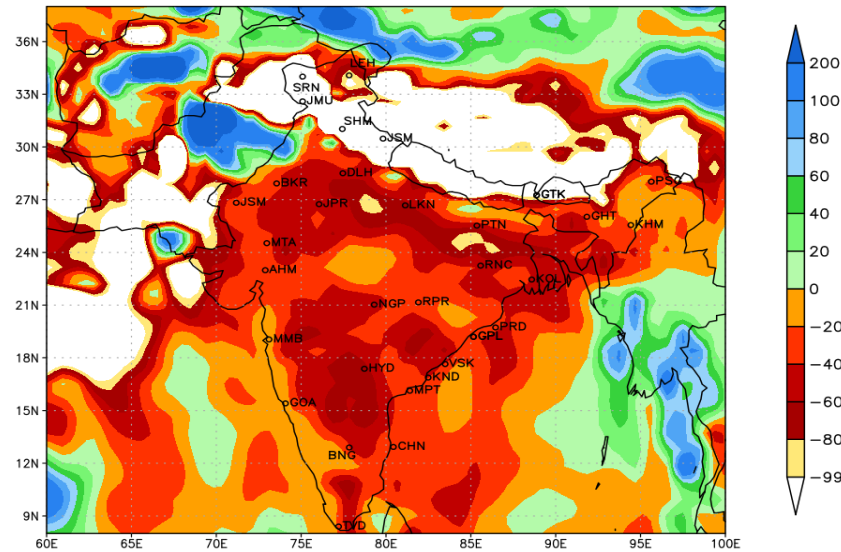
Rain 72h fcst based on 00Z11Oct2013



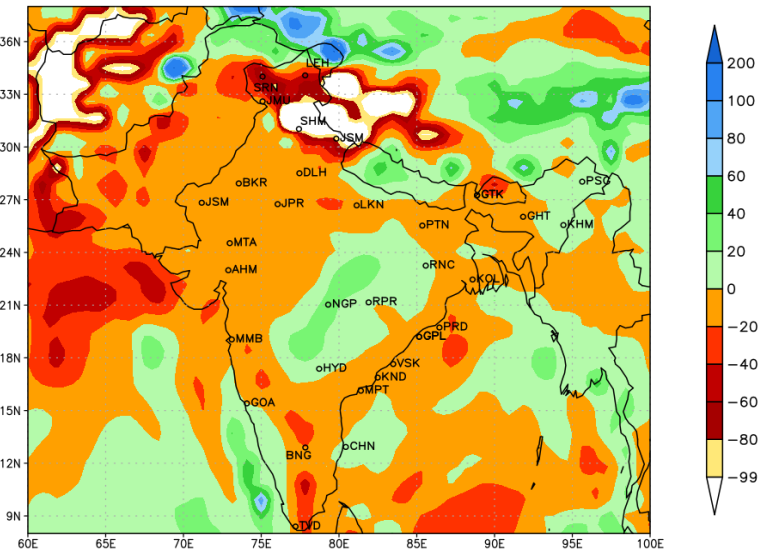
# Climate Forecast System (CFS) products

## Monthly precipitation fcst anomaly; prepared 3 June 2014

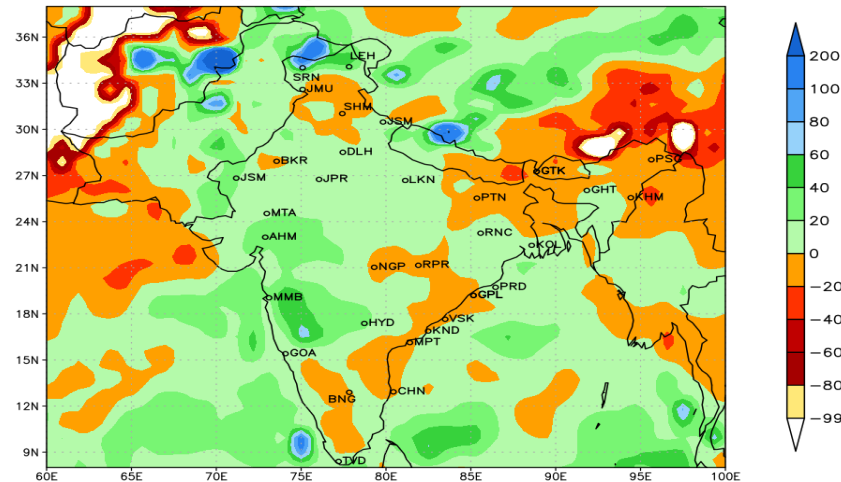
prate anomaly (%) June based on 2014060300 cfsv2



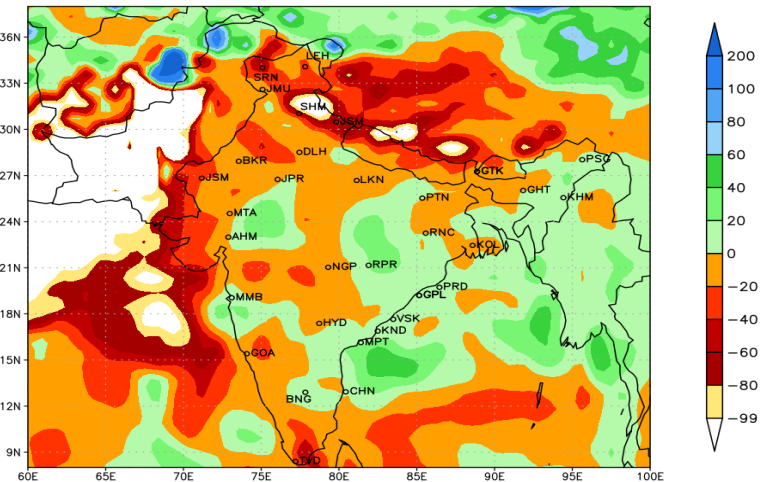
prate anomaly (%) July based on 2014060300 cfsv2



prate anomaly (%) August based on 2014060300 cfsv2



prate anomaly (%) September based on 2014060300 cfsv2





# Historical data sets

- Global gridded data sets from NWP data assimilation systems
- Reanalysis of past observational data
- Include satellite data (1979 onwards)
- Several atmospheric and oceanic parameters
- Analysis of past weather events
- Weather indices; Trend analysis, validation of observational data
- Weather and climate risk management

Thank You